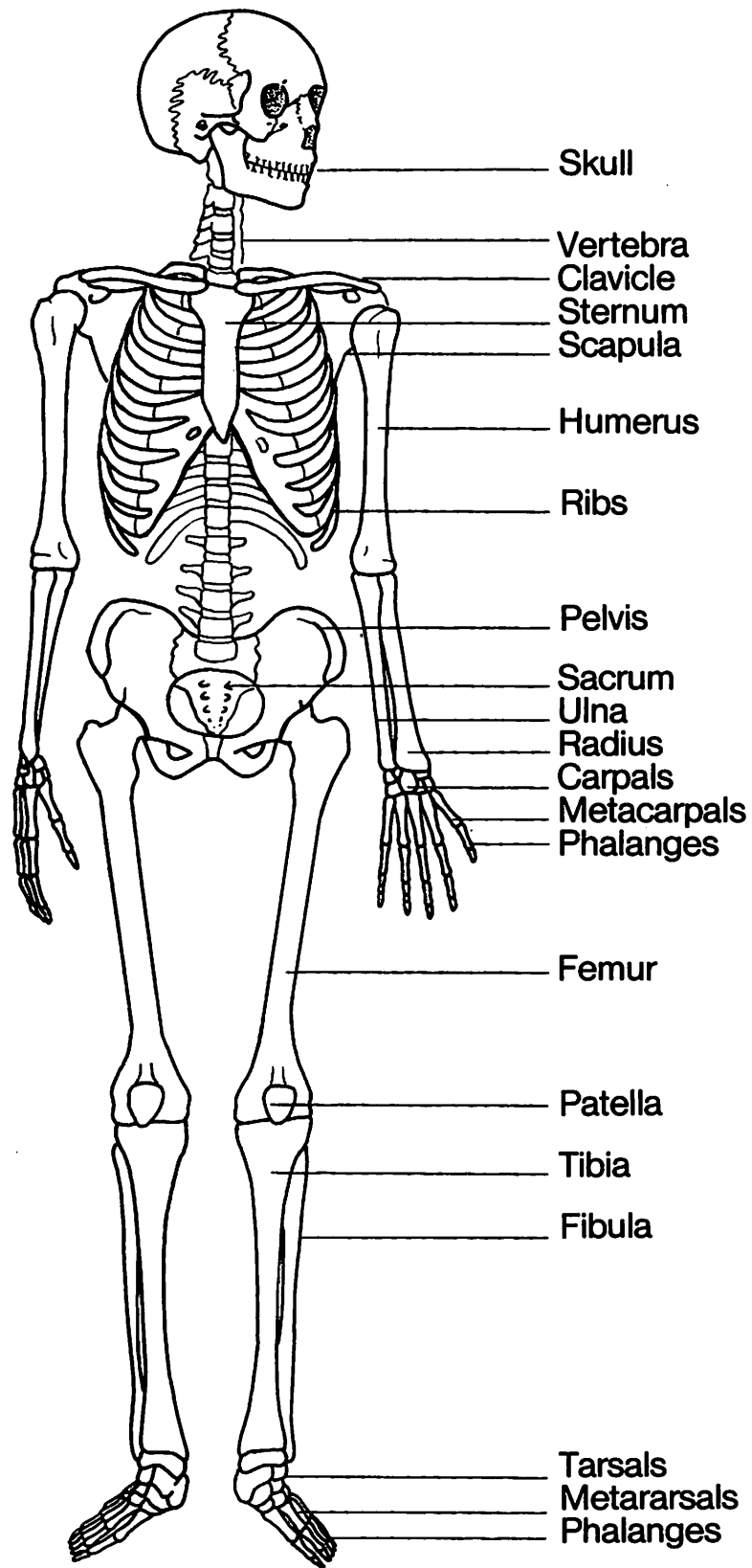
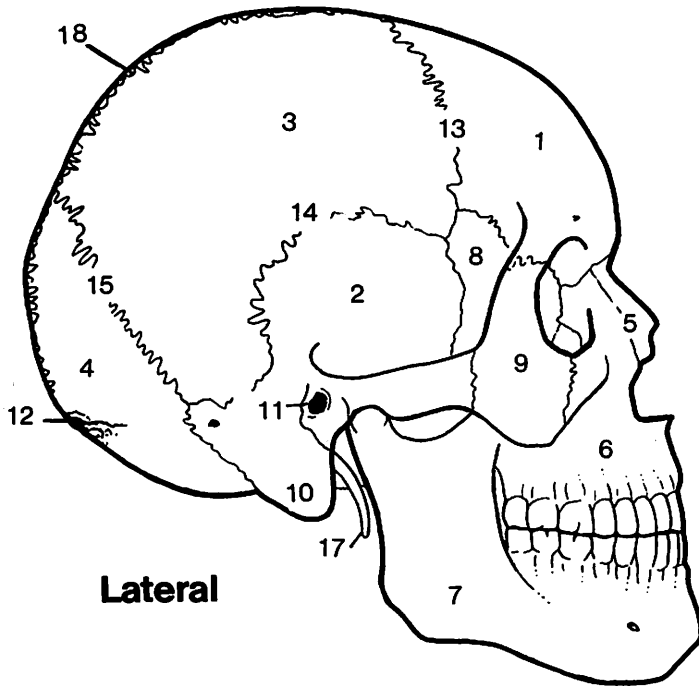


Skeleton

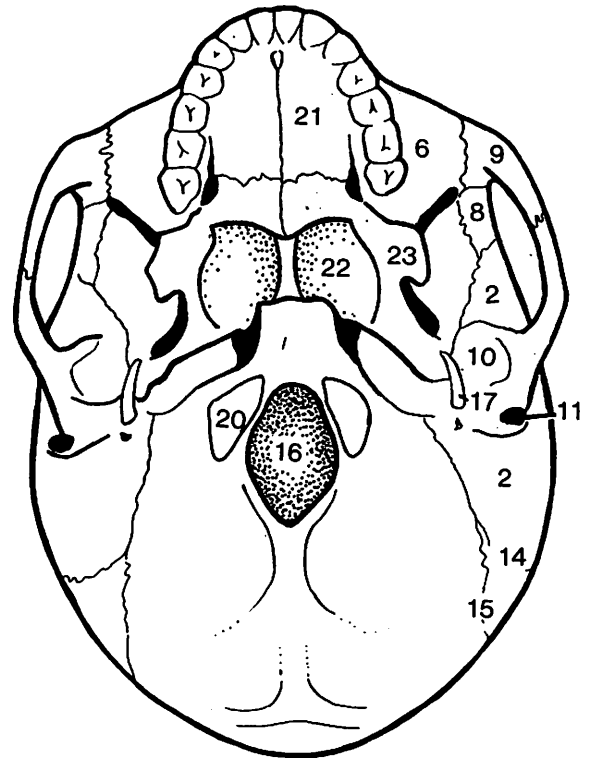


Anterior

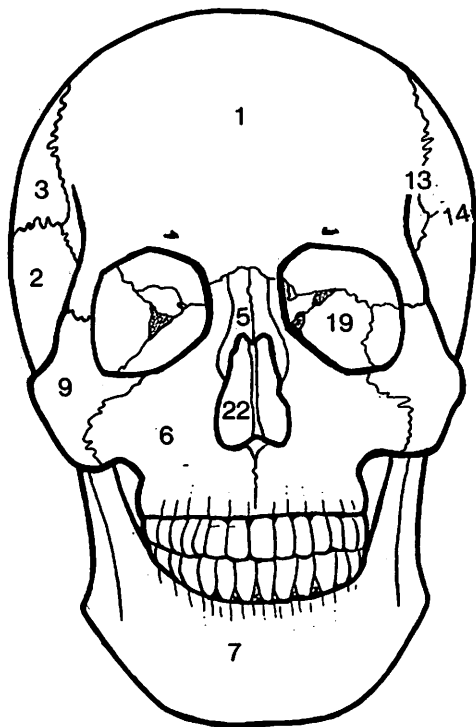
Skull



Lateral



Inferior



Anterior

- | | |
|-------------------------------------|---------------------------------|
| 1. Frontal bone | 14. Squamous suture |
| 2. Temporal bone | 15. Lamboid suture |
| 3. Parietal bone | 16. Foramen magnum |
| 4. Occipital bone | 17. Styloid process |
| 5. Nasal bone | 18. Sagittal suture |
| 6. Maxilla | 19. Orbit |
| 7. Mandible | 20. Occipital condyle |
| 8. Sphenoid bone | 21. Palatine process of maxilla |
| 9. Zygomatic bone and arch | 22. Nasal aperture |
| 10. Mastoid process | 23. Pterygoid plates |
| 11. External auditory meatus | |
| 12. External occipital protuberance | |
| 13. Coronal suture | |